

Recommendations for Update of Mercury Bay South Reserves Management Plan

1. Hahei Beach Recreation Reserve

1.1. RESERVE CLASSIFICATION: Recreation

1.2. Background

This reserve area includes the public carpark areas at Hahei Beach. The reserve adjoins a beachfront Crown reserve, administered by Department of Conservation. This reserve experiences very high visitor numbers over peak periods. Commercial operators are authorised to operate from and across this reserve. We support the status quo of 2 active water based concessions and 1 inactive water based concession licensed to operate across the reserve.

1.3. Reserve Issues

- Conflict exists between DOC and TCDC over management of the reserve and the beachfront carpark which is laid over the Reserve, DOC land and the council marginal strip.
- Freedom camping in the DOC carparks continues despite not being permitted in Hahei.
- The public toilet block is located on the marginal strip administered by DOC.
- There is no accessible access onto Hahei beach from the carpark.
- Insufficient parking to meet peak demand. Exacerbated by long term parking. Visitors park here and walk the track over to Cathedral Cove, take a Kayak trip, or a Water Taxi ride, often parking for over 3 hours. Bus operators often park tour buses for extended periods of time with engines running for air conditioning, angering nearby property owners.
- Insufficient rubbish and recycling facilities to meet peak demand.
- Insufficient toilet facilities to meet peak demand.
- Insufficient shade trees on reserve and crown marginal strip.



Hahei Beach Recreation Reserve - Hahei

- Reserve is lacking a few key facilities including: a roof for the BBQ, bicycle stands and drinking water fountains.

1.4. Management Actions

- Resolve long-running negotiation between Iwi, DOC and TCDC over management of the Beachfront Reserve.
- Work with DOC to address issues arising due to management of adjoining reserves.
- Prohibit Freedom camping in the beachfront carpark.
- Encourage visitors to use the Hahei Visitors Carpark- and prohibit Campervans, tour buses, and large vehicles from parking at the beachfront carpark.
- Designate the small gravel carpark off Harsant Avenue as free parking for residents.
- Continue concrete path to toilets back towards the south to form a disability accessway to the beach.
- A major upgrade of the toilets/ changing room facilities.
- Upgrade rubbish and recycling stations to adequately cope with peak demand.
- Provide a roof for the barbecue to provide shade and shelter, a bike stand, and drinking water fountain.

1.5. Our Suggestions

- Replace feet washing tap with one that switches off as at Hotwater Beach, as current tap is often left on and wastes water in summer.
- Make beachfront carpark 2hrs restricted parking, no fees and no large vehicles.
- Plant trees for shade and protect Pohutukawa trees on the beachfront from being illegally pruned or chopped down.
- Allow for only 3 water-based commercial activity licenses to operate from specific areas on the reserve as defined by Council.

1.6. Comments.

The reserve is heavily used by locals and tourists alike for beach access, the start of the walking track to Cathedral Cove, picnicking, parking, exercise, sports, gatherings, accessing commercial businesses operating across the reserve, and launching small boats. The reserve has currently 2 active and 1 inactive Water-based commercial activity licenses

operating across it and we oppose any changes to the status quo. We strongly support the local operators of Cathedral Cove Kayaks and The Cathedral Cove Water Taxi in their businesses. The Hahei community in general oppose excessive commercialisation of the beachfront reserve. We do not support the wording in the Draft Reserves Management Plan to allow for 2 land-based and 2 water-based commercial activity licenses.

We suggest the Hahei Residents and Ratepayers Association be consulted in any considerations regarding the renewal of concessions or issues of new concessions, on the basis that local community input is considered critical given the sensitivity and importance of this reserve being key gateway for public access to the beach and ocean.

2. Hahei Beach Village Green Reserve

2.1. RESERVE CLASSIFICATION: Recreation

2.2. Background

- This reserve surrounds the local community hall/library site and provide access to surrounding streets. The community hall is operated by an incorporated society/hall committee and is widely used as are the tennis courts and playground.

2.3. Reserve Issues

- Insufficient parking to meet demand, with visitors using it for all day parking and carparks too small for large vehicles campervans. Carpark is also used as the delivery entrance for the local businesses.
- This area receives use from a wide range of groups including hall users, playgroup, art group, tennis, playground users.
- Insufficient shade and seating in reserve, close to playground and outside toilets.
- Ground becomes soggy and waterlogged in winter.
- Insufficient rubbish and recycling facilities to meet demand.
- Information sign inconsistent with other signage in the village.

2.4. Management Actions

- Traffic Management for the car park; suggestions include installing Hall Users Only signs, discouraging campervans and large vehicles, 2 hour time limits, and residents only signs.
- More picnic facilities and shade alongside playground and toilet block.
- Install a structure for shade and seating outside the toilets which also screens the toilets from neighbouring properties overlooking reserve.
- Update Information sign to replicate signage in Hahei Visitor Car Park.
- Signage for and all weather walking track in the north west corner of the reserve to connect Grange Road
- Provide a rubbish and recycling bin outside toilets to cope with peak demand.

2.5. Suggestions



Hahei Beach Village Green - Hahei

- Concrete scooter track around the tennis courts. Smaller children in the village need place to practice biking and scootering – suggested by the Hahei Playgroup who meet once a week in the Hall, current membership 45 children.
- Update basketball court to full half court with new backboard as neighbours have complained current one is too noisy. Collaborate with the Hahei Tennis and Sports Club.
- Install a drinking water fountain and bicycle stand.

2.6. Comments:

We do not support the installation of one of the mini ramps from the Whitianga skatepark in this reserve due to lack of space and feedback we have received from a group of neighbours.

3. Kotare Reserve

3.1. RESERVE CLASSIFICATION: Active Recreation/Recreation/ Esplanade

3.2. Background

- This reserve was a golf course before being subdivided into residential lots in the 1980s and set aside to allow for an area for recreation and sport. Currently it is used for soccer, touch rugby, cricket, dog walking, informal sports, market days, a memorial garden and as a through-way from Pa road to Hahei Beach.

3.3. Reserve Issues

- The ground gets soggy and waterlogged in winter.
- A range of utility services (sewerage pumps stations, water pumps and tanks) are located in the reserve at the Pa road entrance, a St Johns station is in the main carpark
- There is an open drain separating the Carpark from the sports field, toilets and the memorial garden and there is no clear entrance or pathway for visitors to follow.
- Adjoining properties discharge stormwater on to the reserve
- No room for bus parking or concession in the car park
- The toilet block is usually locked.



Kotare Reserve - Hahei

3.4. Management Actions.

- Relocate the halfpipe skateboard ramp from Whitianga skatepark to next to the toilet block.
- Provide an all-weather path going past the toilet block, and proposed skate ramp and on to the Memorial Garden.
- Open the toilet block permanently for public access.
- Continue to clean up the esplanade reserve on the camp boundary and investigate forming a walkway along the Wigmore/Ko Tahuri-ki-te Rangi stream to meet up with existing footbridge.
- Investigate re-positioning the utility services away from the Pa road entrance to the reserve and redesigning the entrance to the reserve.
- Install lights for the football field in winter for training. (Can be attached to the building, can be portable, can be just an all-weather power point for plugging them in.)
- Install a drinking water fountain by toilets on reserve,
- Install rubbish and recycling bins on the reserve.
- Plant stream banks with low growing natives and protect the Pohutukawa trees on the stream edge.

3.5. Comments.

The Hahei Residents and Ratepayers Association committee voted to approve, in principle, the addition of a sculpture trail to the Kotare Reserve, following the all-weather hoggin walkway through the reserve from the Hahei visitor carpark. The General Policies Reserves Management Plan, 6.8: Gifts, Commemorative Features and Public Art policy will likely apply.

4. Margaret Place Reserve

4.1. RESERVE CLASSIFICATION: Recreation

4.2. Background

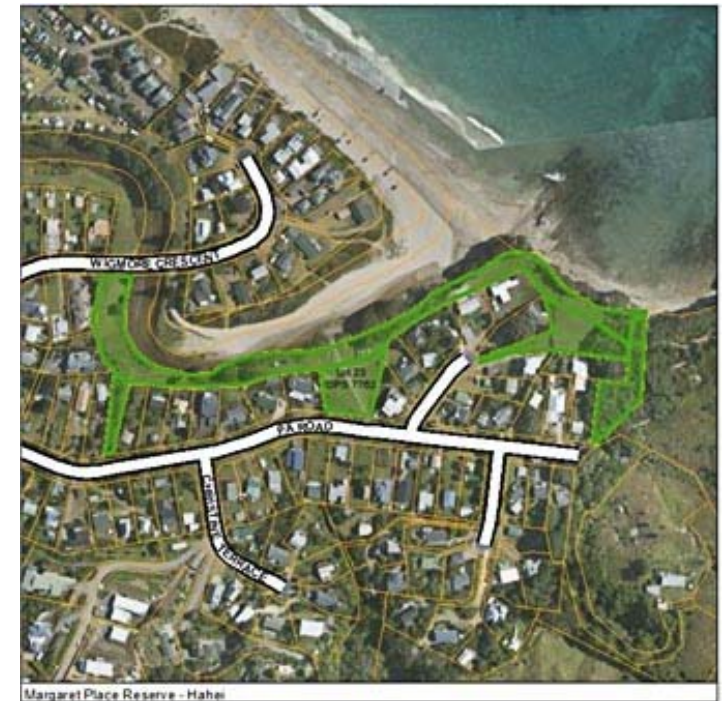
- This reserve is on the eastern side of the Wigmore/ Ko Tahuri ki-te-Rangi stream and contains areas of Wahi Tapu for Ngati Hei. This reserve boundary has expanded since the 2007 Reserves Management Plan to cover the entire south-eastern side of the stream up to the Wigmore Crescent bridge. The lower/esplanade part of the reserve includes vehicle accessway onto the beach. Spectacular views of Hahei Beach exist from the higher part of the reserve up from the end of Margaret Place.

4.3. Reserve Issues

- Toilet facility is insufficient to meet demand.
- Reserve boundaries with adjoining properties are not clear.
- Encroachment from neighbouring properties continues.
- Higher part of the reserve includes steep cliffs with no safe pathway down to the beach and is a safety concern. The Hahei Reserves group have tried to plant the cliff edge to protect from erosion and as a safety barrier to keep people away from the cliff edge. This was met with some resistance from adjoining property owners.
- Reserve lacks sufficient signage about recreational fishing rules but is a popular place for people to leave their vehicles to go collecting kaimoana.
- Visiting fishers often leave kaimoana rubbish in the bin which quickly turns rancid in summer.

4.4. Management Actions.

- Upgrade the toilet facility.
- Protect coastal Pohutukawa along the cliff edge
- Work with Ngati Hei to protect areas of Wahi Tapu.
- Maintain weed control on cliff edge and continue planting of low growing species to protect cliff edge.
- Install boundary markers to define private property and reserve.



Margaret Place Reserve - Hahei

- Install a Recreational Fishing Rules sign at edge of reserve and a sign to encourage removal of fishing rubbish.
- Develop a walkway along esplanade reserve by continuing to speak with neighbours and work with WRC and Environment Waikato, to plant stream banks with low growing native plants. Develop seating at key viewpoints.
- Leave majority of reserve as open space area.
- No development of walkway paths or structures down the cliff edge to the beach will be permitted.
- No concessions to operate across this reserve.

4.5. Suggestions:

We suggest the Hahei Residents and Ratepayers Association be consulted in any considerations regarding the renewal of concessions or issues of new concessions, on the basis that local community input is considered critical given the sensitivity and importance of this reserve being a key gateway for public access to the beach and ocean.

5. Wigmore Stream Reserve (Ko Tahuri-ki-te-Rangi)

5.1. RESERVE CLASSIFICATION: Recreation and Ecological Linkages. Esplanade/Recreation.

5.2. Background

- This reserve provides access to the eastern end of Hahei Beach and the banks of the Wigmore/Ko Tahuri ki-te-Rangi stream. Vehicles towing trailer boats access the beach from the stream reserve. The reserve contains areas of cultural significance for Ngati Hei. This reserve boundary has changed since the 2007 Reserves Management Plan to absorb the Orchard Road esplanade reserves.

5.3. Reserve Issues

- Water quality in Wigmore/ Ko Tahuri ki-te-Rangi stream suffers greatly in periods of high visitor numbers, low rainfall, after high rainfall, and in king tides. Neighbouring properties with old septic systems, stormwater runoff and cows upstream are known polluters.
- Driving and parking Tractors and vehicles over and across the dunes has adversely affected the dune system across this reserve. Over 50 vehicles and trailers per day parking on the foreshore area during peak visitor periods.
- Vehicles towing boat trailers, commercial operators, picknickers, dog walkers, and families all use the beach alongside the stream. Conflict occurs frequently between pedestrians and vehicles especially at times where the weather or tide has reduced the beach area.
- Vehicles continue to access the beach via the reserve when not launching or retrieving boats, despite the TCDC bylaw to the contrary.
- A large portion of these reserves have been eroded and are now part of the beach area.
- Insufficient parking in Wigmore Crescent cul de sac causes conflict with neighbouring properties due to inconsiderate parking, exacerbated by commercial activity on the beach.
- The stream can flood in periods of high rain, making the esplanade walkway impassable.
- The stream blocks up with sand in certain weather patterns requiring digging out by digger.
- Encroachment onto reserve from adjoining properties including private gardens, structures, garden waste dumping, vehicles accessing private property across the reserve and poisoning of pohutukawa trees on the reserve.
- The Esplanade walkway entry point off Pa road is waterlogged in winter and lacks clear signs.



Wigmore Stream Reserve (Ko Tahuri-ki-te-Rangi) - Hahei

5.4. Management Actions.

- Actively engage all parties to come up with a solution to the pollution of the Wigmore/Ko Tahuri ki-te-Rangi stream and support endeavours to clean up water quality of the stream.
- Enforce limited access of vehicles on the beach, e.g. Only for launching and retrieving boats.
- Proactive action to find a workable solution to the conflict between pedestrian beach users and vehicles such as: clear signage, separate peak-time tractor parking area, clear demarcation of the dune system etc.
- Work with local community groups and residents to protect the dunes.
- Work with local community groups/HRRRA to unblock the stream when necessary.
- Allow only two commercial activity licenses to operate across the Reserve. We strongly support the two current operators in their businesses.
- Maintain a safe mown walkway onto the beach adjacent to the vehicle access off Wigmore Crescent.
- Install markers on the reserve to define reserve boundaries and private property.
- Rename or co-name the reserve Ko Tahuri ki-te-Rangi Reserve on all signage.
- Stop encroachment from neighbouring properties and protect Pohutukawa trees.
- Maintain the Esplanade reserve areas with suitable low native planting to protect stream banks and sand dunes in collaboration with WRC.
- Provide a dog litter bag dispenser at the walking access adjacent to vehicle access
- Stop stormwater entering the Wigmore stream from neighbouring properties.
- Install clear signs at Pa road entrance and investigate feasibility of all-weather walkway.

5.5 Suggestions.

We suggest the Hahei Residents and Ratepayers Association be consulted in any considerations regarding the renewal of concessions or issues of new concessions, on the basis that local community input is considered critical given the sensitivity and importance of this reserve being a key gateway for public access to the beach and ocean.

6. Tutaritari Reserve

6.1. RESERVE CLASSIFICATION: Recreation

6.2. Background

This reserve area covers the bottom of a small valley that includes a stream and large Pohutukawa trees. It was vested to the council in 1963 after subdivision and includes the remains of a rock wall that was built by the Wigmore family. The start of the walking track to Cathedral Cove begins at the south eastern corner of the reserve, adjoining the crown marginal strip along the beachfront.

6.3. Reserve Issues

- Parts of the Reserve can get boggy in times of high rainfall and due to overland drainage from surrounding properties.
- Stream edge needs planting due to erosion from heavy rain
- Dotterels nesting site on the beach just below the reserve.
- Walkways into and through the reserve lack functional directional signage, often becoming wet and overgrown.
- Encroachment of private gardens onto the reserve, dumping of green waste, extension of private lawns and wastewater dispersal fields.
- Testing of the Tutaritari stream has shown high pollution levels.

6.4. Management Actions.

- Provide all-weather walkways and/or fix drainage issues.
- Install clear directional signage.
- Install clear reserve boundary markers to indicate reserve and private property.
- Work with WRC to plant and protect stream edge and investigate possible causes of pollution.
- Protect all Pohutukawa trees on the reserve.
- Regular maintenance of the track up to Tutaritari Road.
- Enforce encroachment issues as per General Policies Reserve Management Plan 7.3.3.

